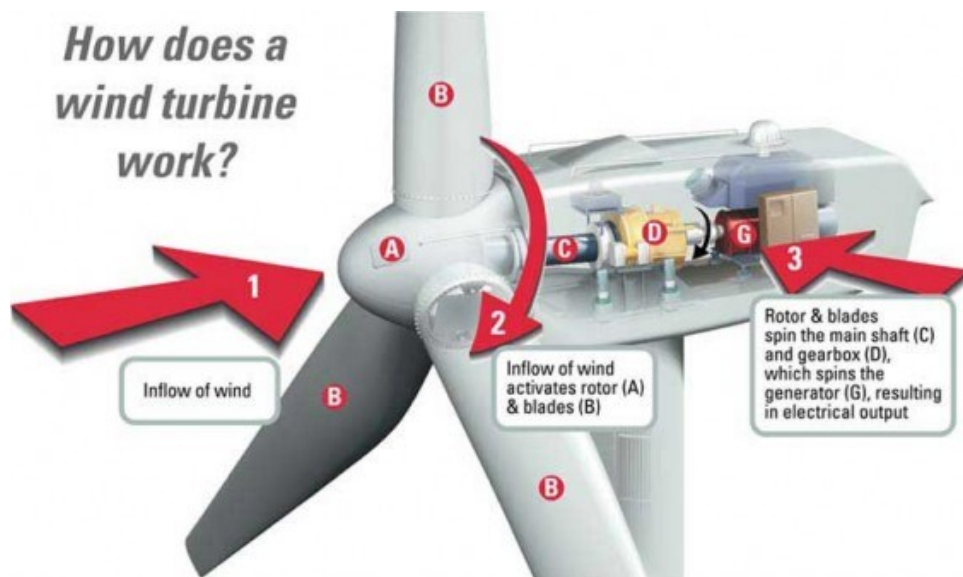
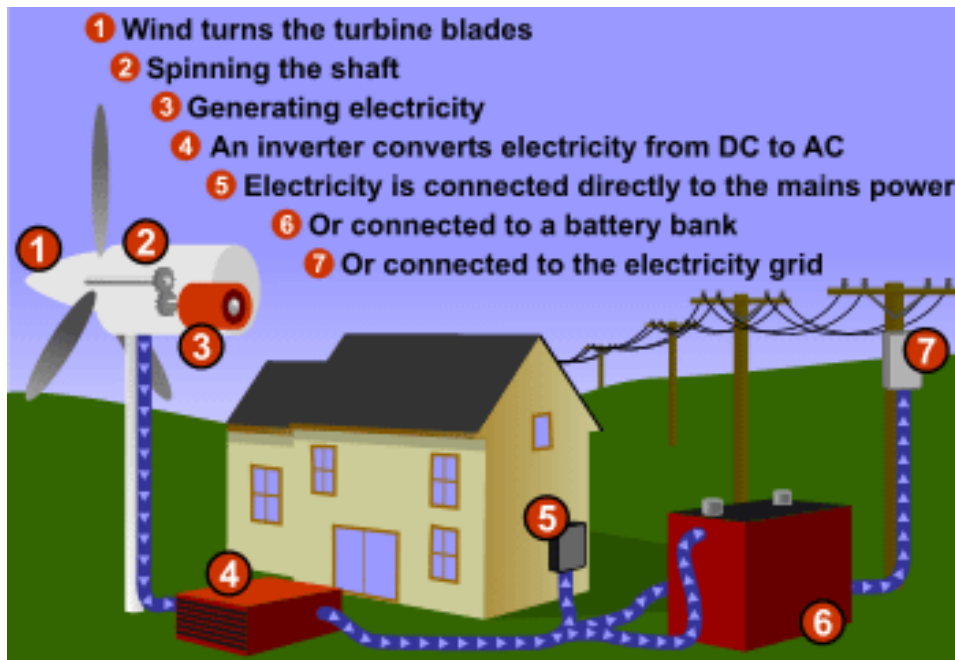


Renewable energy

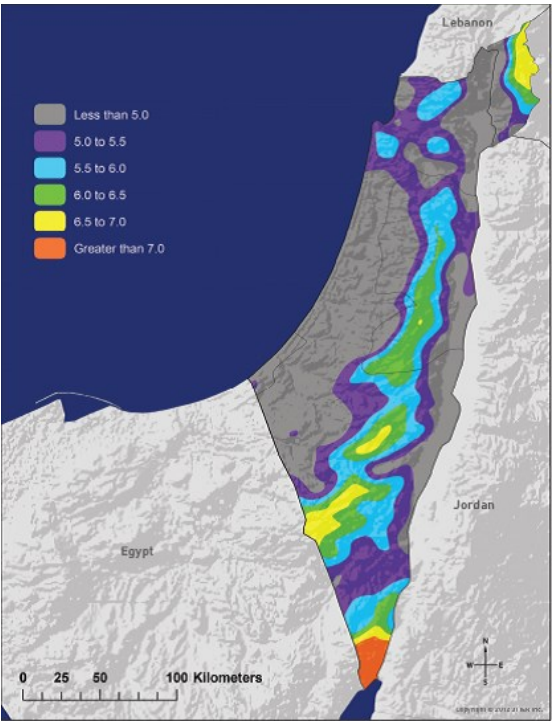
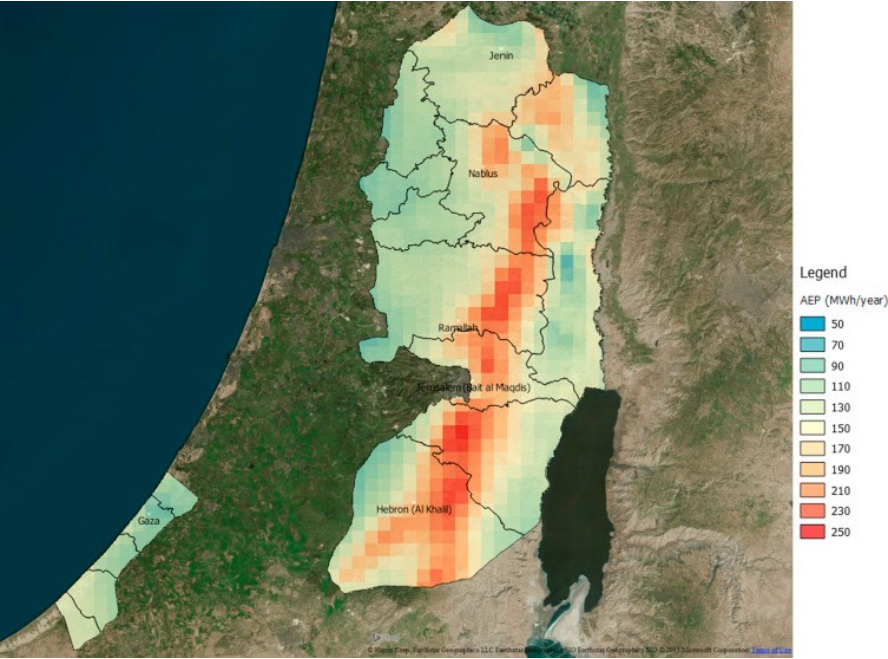
Wind Energy





Wind energy - Palestine

potential of wind energy seems to be limited to the mountains (elevation of about 1000 m); regions of Nablus, Ramallah and Hebron where the speed surpass 6 m/s and the potential about 600 kWh. Initial studies shows that the wind regime is suitable for operating a wind turbine for wind power generation in city of Hebron in West Bank.



Technical data

There are a few wind energy projects underway, including at the hospital in Hebron

- Annual Wind Average 7-10 m/s
- Max Cut-in Wind Speed 3 - 4 m/s
- Cut-out Wind Speed for excessive wind ≈ 25 m/s
- Hub Height 45 m- 55 m
- Lower Tower Diameter 2-5 m
- Upper Tower Diameter 1.5-2 m
- Nominal Power 750 kW
- Operating Atmospheric Temperature From -10°C to 40°C



Wind energy - buildings

Active wind energy use systems are wind turbines. Medium- and small-scale wind turbines are used in the buildings. These turbines can be placed in a suitable spot in the garden or on the roofs. In multistory high-rise buildings, there are examples of use of wind turbines integrated into the building



